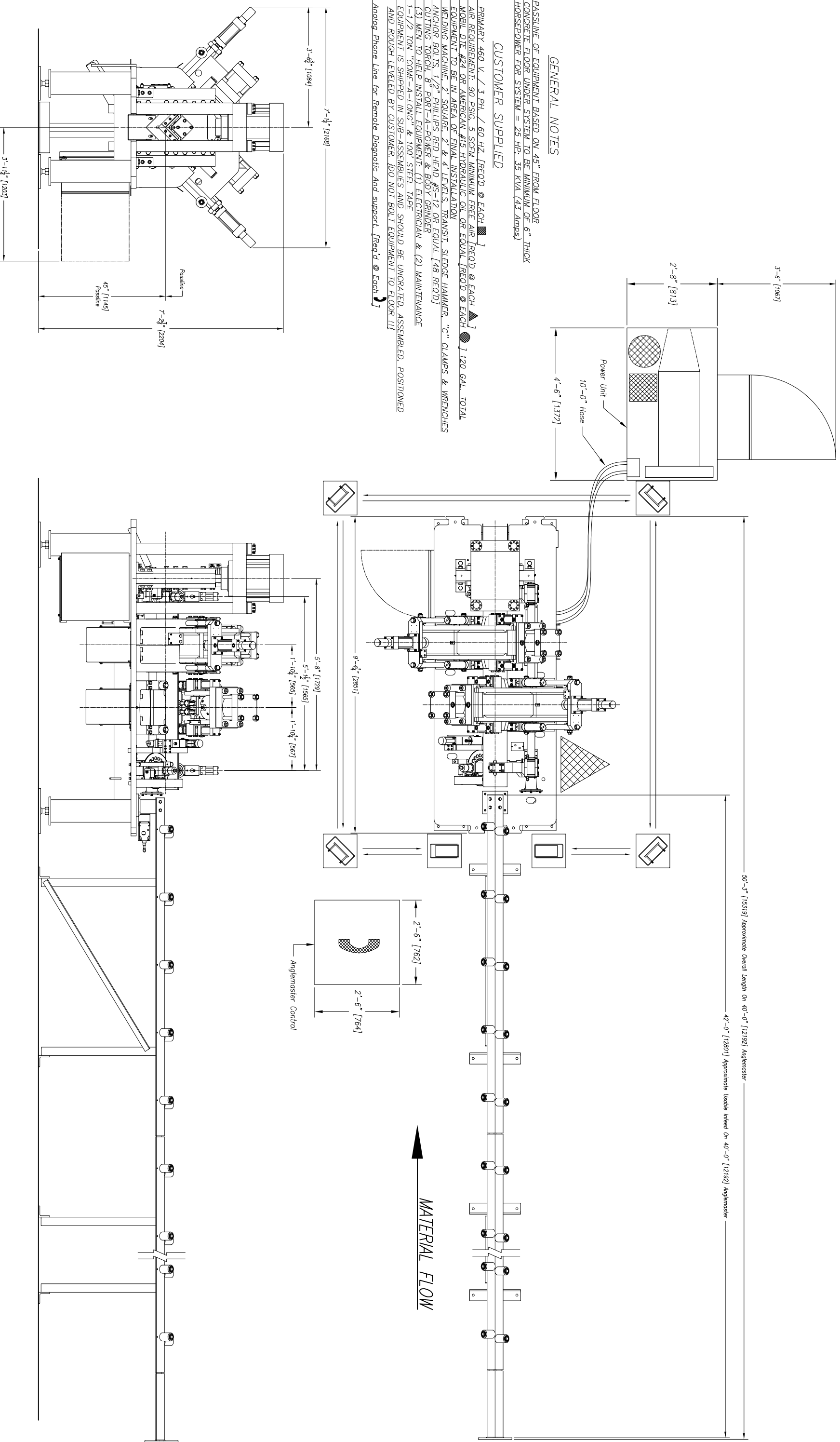


- GENERAL NOTES**
- 1) PASSLINE OF EQUIPMENT BASED ON 45" FROM FLOOR
 - 2) CONCRETE FLOOR UNDER SYSTEM TO BE MINIMUM OF 6" THICK
 - 3) HORSEPOWER FOR SYSTEM = 25 HP- 35 KVA (43 Amps)

CUSTOMER SUPPLIED

- 5a) PRIMARY 480 V. / 3 PH. / 60 HZ. [REQ'D @ EACH]
- 5b) AIR REQUIREMENT: 90 PSIG, 5 SCFM MINIMUM FREE AIR [REQ'D @ EACH] 120 GAL. TOTAL
- 5c) MOBIL DTE #24 OR AMERICAN #15 HYDRAULIC OIL OR EQUAL [REQ'D @ EACH]
- 5d) EQUIPMENT TO BE IN AREA OF FINAL INSTALLATION
- 5e) WELDING MACHINE, 2" SQUARE, 2' & 4' LEVELS, TRANSIT, SLEDGE HAMMER, "C" CLAMPS & WRENCHES
- 5f) ANCHOR BOLTS, 1/2" PHILLIPS RED HEAD #5-12 OR EQUAL [48 REQ'D]
- 5g) CUTTING TORCH, 8" PORT-A-POWER & BODY GRINDER
- 5h) 1-1/2 TON, "COME-A-LONG" & 100' STEEL TAPE
- 5k) EQUIPMENT IS SHIPPED IN SUB-ASSEMBLES AND SHOULD BE UNCRATED, ASSEMBLED, POSITIONED AND ROUGH LEVELLED BY CUSTOMER. IDO NOT BOLT EQUIPMENT TO FLOOR !!!
- 5l) Analog Phone Line for Remote Diagnostic And support. [Req'd @ Each]



REVISION/C.N.#	BY	DATE
E		
D		
C		
B		
A		
LET		

Peddinghaus Corp.
 BROADLEY, ILL. U.S.A.
 AFPS 623 O Anglemaster
 for

IMPORTANT Safety Note:
 Because of the difficulty to effectively guard the responsibility to prevent access by unauthorized personnel and to provide safe crossing.
 DRAWN BY: SCALE: 3/4" = 1' DATE:
 5. *Coppenhaver* DRWG. NO.

Machine Amperage Ratings and Power Requirements

Machine Name <i>(Underlined machines are hyperlinked)</i>	Machine Number	Full Load Amps @						Power kVA
		208 V	230 V	380 V	415 V	460 V	575 V	
DRILLS								
PCD 1100	YD18450-310-00-00	252.12 A	228.00 A	138.00 A	126.36 A	114 A	91.2 A	90.72
MDL 1000/B (460V 20 HP Power Unit)	YD18351-310-00-00					33 A		26.26
MDL 1000/B (400V 25 HP Power Unit)	YD18351-310-00-00			45.3 A				29.78
MDL 1000/A		88.90 A	80.40 A	48.66 A	44.56 A	40.2 A	32.16 A	31.99
BDL 1250/B (10 HP)	YD18201-311-00-00	214.52 A	194.00 A	117.42 A	107.52 A	97 A	77.6 A	77.19
BDL 1250/B (15 HP)	YD18201-316-00-00	243.27 A	220.00 A	133.16 A	121.93 A	110 A	88 A	87.54
BDL 760 (with Siemens Control)	YD18237-310-00-00	110.58 A	100.00 A	60.53 A	55.42 A	50 A	40 A	39.79
ANGLE MACHINES								
Ocean Clipper	YD19123-310-00-00	88.46 A	80.00 A	48.42 A	44.34 A	40 A	32 A	31.83
PLATE MACHINES								
FPB 1800/3C - 500/3F	YD18242-310-00-00	179.58 A	162.40 A	98.29 A	90.00 A	81.2 A	64.96 A	64.62
FDB 2500/1500 (15HP SpindleMotor)	YD18280-311-00-00	115.00 A	104.00 A	62.95 A	57.64 A	52 A	41.6 A	41.38
FDB 2500/1500 (37.5HP SpindleMotor)	YD18280-312-00-00	185.77 A	168.00 A	101.68 A	93.11 A	84 A	67.2 A	66.85
HSFDB 2500/1500	YD18281-310-00-00	284.18 A	257.00 A	155.55 A	142.43 A	128.5 A	102.8 A	102.26
FPDB 2500/1800 (15HP SpindleMotor)	YD18290-311-00-00	216.73 A	196.00 A	118.63 A	108.63 A	98 A	78.4 A	77.99
FPDB 2500/1800 (37.5HP SpindleMotor)	YD18290-312-00-00	306.30 A	277.00 A	167.66 A	153.52 A	138.5 A	110.8 A	110.22
Machine Name <i>(Underlined machines are hyperlinked)</i>	Machine Number	Full Load Amps @						Power
COPING MACHINES								
ABCN 1250/3C	YD18047-310-00-00	90.67 A	82.00 A	49.63 A	45.45 A	41 A	32.8 A	32.63
Ring of Fire	YD17700-310-00-00	111.46 A	100.80 A	61.01 A	55.87 A	50.4 A	40.32 A	40.11
MEBA SAWS								
1140/510 Straight Cut (Tandem no PU)	YD3464329	83.82 A	75.80 A	45.88 A	42.01 A	37.9 A	30.32 A	30.16
1140/510 Straight (stand alone w/ PU)	YD3464329	108.14 A	97.80 A	59.19 A	54.20 A	48.9 A	39.12 A	38.91
1020/1270 Miter (Tandem no PU)	YD3464455	96.67 A	87.42 A	52.91 A	48.45 A	43.71 A	34.968 A	34.78
1020/1270 Miter (stand alone w/ PU)	YD3464455	120.99 A	109.42 A	66.23 A	60.64 A	54.71 A	43.768 A	43.54
POWER UNITS								
10 GPM Power Unit		33.17 A	30.00 A	18.16 A	16.63 A	15 A	12 A	11.94
20 GPM Power Unit		66.35 A	60.00 A	36.32 A	33.25 A	30 A	24 A	23.87
HYPER THERM UNITS								
HT2000 Plasma Torch		103.94 A	94.00 A	56.89 A	52.10 A	47 A	37.6 A	37.40
HT2000LHF Plasma Torch		103.94 A	94.00 A	56.89 A	52.10 A	47 A	37.6 A	37.40
HPR260 Plasma Torch	Note: kW=45.5	143.09 A	129.40 A	78.32 A	71.72 A	64.7 A	51.76 A	51.49
HT4400 Plasma Torch		238.85 A	216.00 A	130.74 A	119.71 A	108 A	86.4 A	85.95